

nils@nilslindstrom.com

OBJECT: The best way to thoroughly understand, identify and appreciate the anatomical differences between font families is to draw the type. The four major type groups will be discussed. Students will be able to identify and place any font into its appropriate category. Some discussion on controversial fonts and differing opinions.

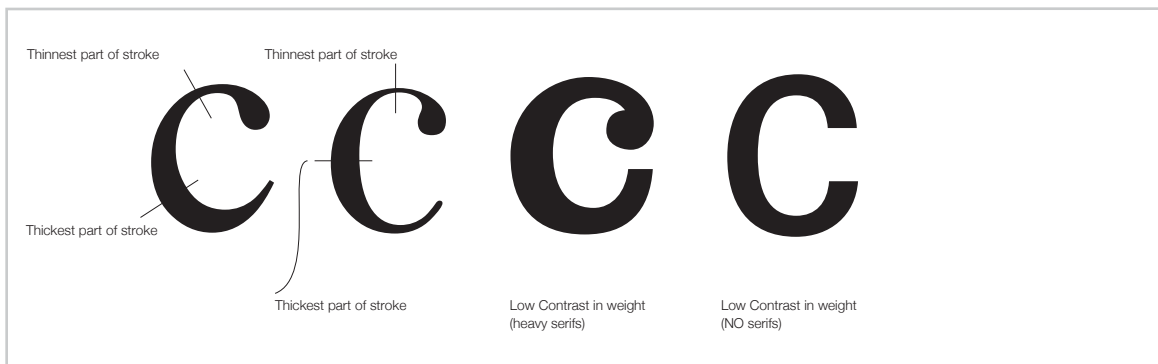
ASSIGNMENT: Select three words that are related to each other conceptually. An example could

be: "teen, pop, sensation" or "black, scary, orange." The words should cause the reader to form an assumption. In the first example the assumption is a teen celebrity like Britany Spears. The second example the assumption could be Halloween. Now juxtapose an image (photo, illustration or drawing) next to the words that changes the context of the words. so that when the image is seen next to the words their meaning is radically altered. For example:

The image next to "teen, pop, sensation" is a zit. The meanings of the words "pop and sensation" are completely changed. The image next to "black, scary, orange" could be a photo of O.J. Simpson, or Art Center.

DRAWING:

Each word will be rendered in graphite with an x-height of 1-1/4" in each of the following styles:



FINISHED WORK:

Each word and the image should be tightly rendered on tracing paper and matted with a cut window. There will be a class demonstration for sizing, cutting and mounting the art work.

