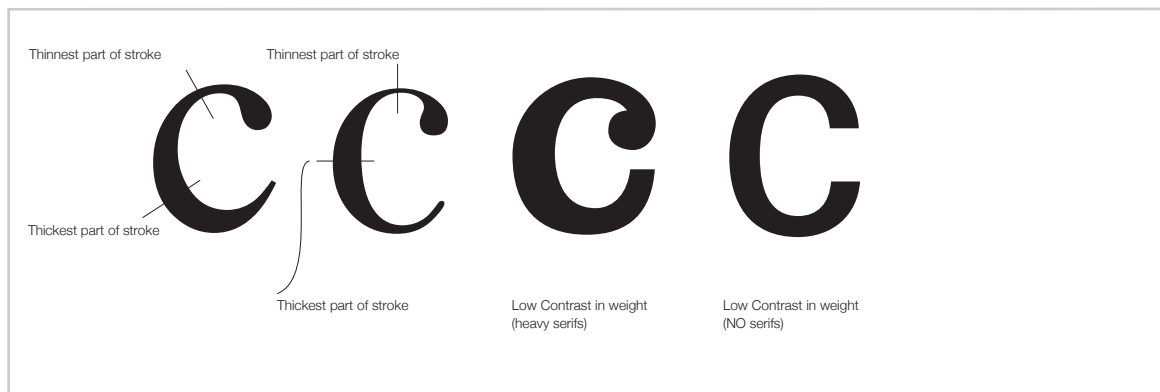


nils@nilslindstrom.com  
 Summer / 2008

**OBJECT:** The best way to thoroughly understand, identify and appreciate the anatomical differences between font families is to draw the type. The four major type groups will be discussed. Students will be able to identify and place any font into its appropriate category. Some discussion on controversial fonts and differing opinions.

**ASSIGNMENT:** Select a four-five letter word: preferably your name or part of your name.  
 Render each letter in graphite in a different font from the four different type groups listed here:

Modern, Old Style, Slab Serif, Sans Serif



Arrange your letters in an interesting layout. You may even create ligatures (where two characters touch). Not all letters have to be on the same base line. They do not have to be the same size or weight but the word/name must be legible.

Design and render a monogram or logo that represents the student. Work in pencil to a tight comp.

**FINISHED WORK:**

Word should be tightly rendered on tracing paper and matted with a cut window. There will be a class demonstration for sizing, cutting and mounting the art work.

